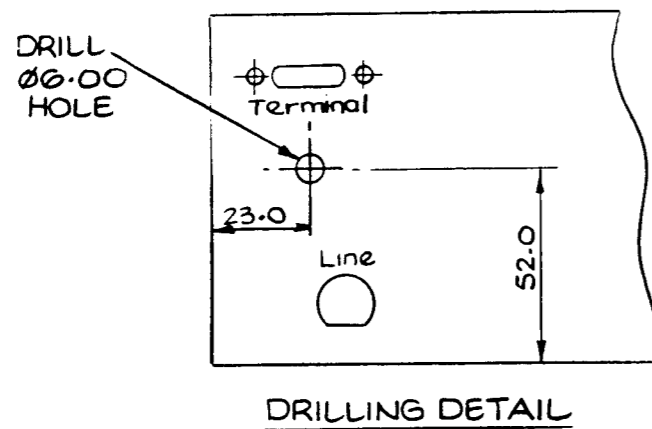


DO NOT SCALE



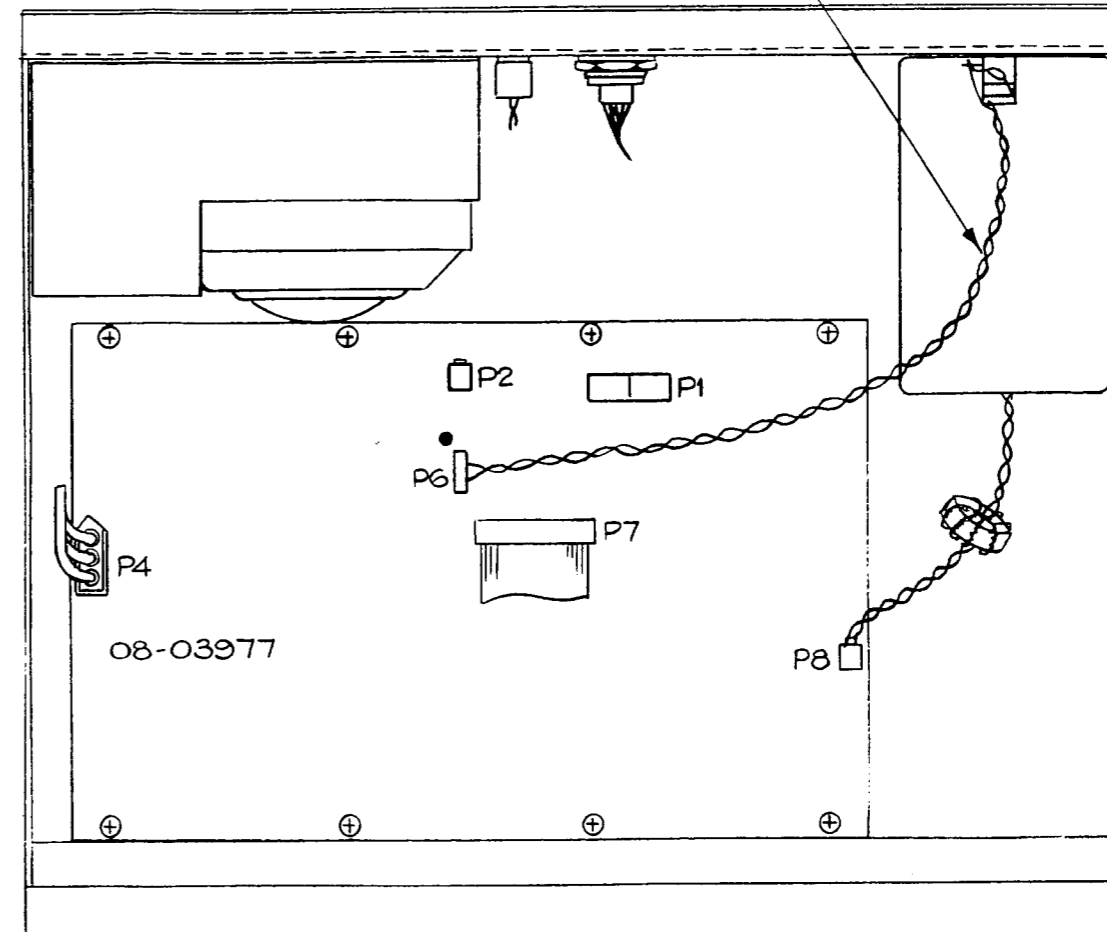
Notes

1. Remove 4 screws securing Console top to chassis. Disconnect wiring from connectors P1 and P7 on Audio Processing PCB, P3 on Microcontroller & Display PCB and interconnecting earthing wire enabling top cover to be separated from chassis.
2. Remove 8 screws securing Audio Processing PCB Assembly to chassis. Remove PCB.
3. Remove 2 screws securing Line Interface Unit (2W or 4W) to chassis. Remove Unit.
4. Drill 6mm dia. hole in rear panel of chassis as indicated. Remove all burrs around hole
5. Replace Audio Processing PCB Assembly and Line Interface Unit.
6. Fit Morse Key Cable 08-03261 to rear of chassis. Connect plug on loom to P6 on Audio Processing PCB Assembly oriented such that white dot on PCB aligns with Red dot on connector.
8. Replace cables from MicroController & Display PCB. Secure Console top to chassis with 4 screws.

Parts List

ITEM	PART No	DESCRIPTION
-	15-10374-001	Fitting Instructions
-	08-03261	Cable, Morse Key

CABLE, MORSE KEY
08-03261



ISSUE 2
DOT MOVED
CIR 23664
lu 25-6-93

ISSUE 3
DRILL HOLE WAS
31.0
CIR 23774
lu 19-10-93

	SCALE		TITLE		COPYRIGHT © CODAN 1991	
	DRN.	APJ	DATE	OPTION M		
	CHKD.	AMJ	6-9-91	FITTING INSTRUCTIONS		
MATERIAL	APPD.	<i>MJ</i>	12-11-91	DRAWING DOC NO.		A3 15-10374-001
FINISH	TOLERANCES		ISS		SHT 1	
	UNLESS OTHERWISE STATED		X 2 3		OF 1	
	2 PLACES DEC ±					
	1 PLACE DEC ±					
	ANGULAR ±					